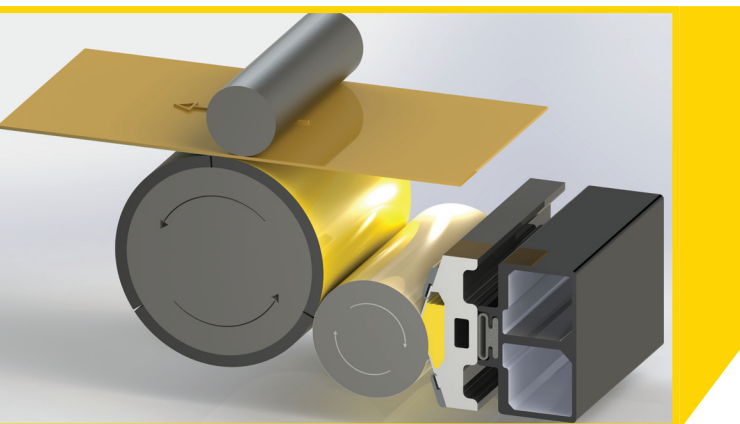




ACCUPRINT® The Reinvented Chambered Doctor Blade



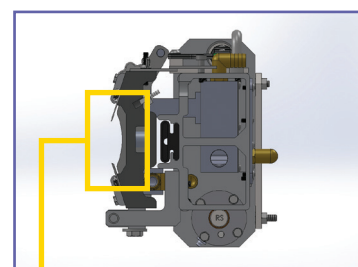
SUN Automation Group®, the company that developed one of the best selling single blade systems ColorMaster®, reinvented the chamber doctor blade system with AccuPrint®. AccuPrint is a revolutionary and superior successor to RainbowGraphics, with advanced wash-up and ink control. This newly developed flexo ink-metering system protects ink from the harsh factory environment to maintain ink quality and improve performance. For superior graphics using quality inks and substrates, AccuPrint is the ink system of choice.

Features And Benefits

- ▶ Tool-less Blade Holder: Replace blades quickly while preventing damage from tools near sensitive equipment
- ▶ Advanced Wash-up: Innovative design prevents clogging and allows for quick ink recovery
- ▶ Cartridge End Seal: Replace end seals easily and quickly
- ▶ Anilox Roll Drive (optional): Precise speed control
- ▶ Totally Enclosed Chamber System: Keeps dust and particles out

ROI Considerations

| ROI | Roll/Roll | AccuPrint (113 inches/2.8 meters) |
|--|--|--|
| Set-up time | 15-20 min | 5-7 min |
| Ink waste (during wash) | 4-77 pounds (1.8-35 Kg) | 1 pound (.45 Kg) |
| Wash water use | Up to 15 gallons (56.7L) | 4-8 gallons (15-30 L) |
| Routine maintenance (recovery cost per year) | \$2,200 (1,676€) | \$1,240 (945€) |
| Rejections/returns (ink film) | Varies with speed and pressure setting | Maintains the same metering under all conditions |
| New market penetration (higher graphics) | Limited graphics capability | Better margin work |
| Anilox roll care (cleaning) | Without automated wash-up vulnerable to dried ink in cells | Helps maintain integrity of intended cell volume |



Two blades and seals on the ends ensure the system is fully enclosed, protecting ink from containments.

Available On Your Machine

AccuPrint is available on virtually every type of finishing machine, from field upgrades or as optional equipment on new machines. This totally enclosed ink system is available in widths from 60" (150cm) to 220" (560 cm).

- ▶ Replace Your Outdated or Inferior Ink Systems:
sunautomation.com | 410.472.2900

FEEDING

PRINTING

CONVERTING

SUPPORT